





**£325,000**

A three bedroom bungalow currently configured as a two bedroom- adapted for wheelchair use- NO CHAIN- located on the southside of Aylesbury- close to Stoke Mandeville Hospital, viewing recommended.

# Property Description

## ENTRANCE

Frosted double glazed front door opens to:

## ENTRANCE HALL

Meter cupboard, built in cupboard, access to loft space, doors to:

## LOUNGE 12' 2" x 16' 10" (3.71m x 5.13m)

Double glazed patio doors open to the rear garden, radiator, electric fire, door to kitchen.

## KITCHEN 7' 10" x 13' 10" (2.39m x 4.21m)

Double glazed windows to the side and rear aspects, range of storage units at base and eye level, rolled edge work surface areas, fitted hob, one and a half bowl single drainer sink unit with mixer tap, wall mounted gas boiler, door to lean-to:

## LEAN-TO

UPVC lean-to with door to the rear garden, door to garage, cold water tap.

## BEDROOM ONE 10' 0" x 13' 2" (3.05m x 4.01m)

Double glazed window to the front, radiator.

## BEDROOM TWO 10' 2" x 8' 10" (3.10m x 2.69m)

Double glazed window to the front, radiator, open to the bathroom.

## BATHROOM

Formerly the third bedroom and now comprising panelled bath, low level wc, wash hand basin, radiator, tiled floor, double glazed window to the side.

## SHOWER ROOM

Frosted double glazed window to the side, shower cubicle, low level wc, pedestal wash hand basin, radiator, tiled floor.

## OUTSIDE

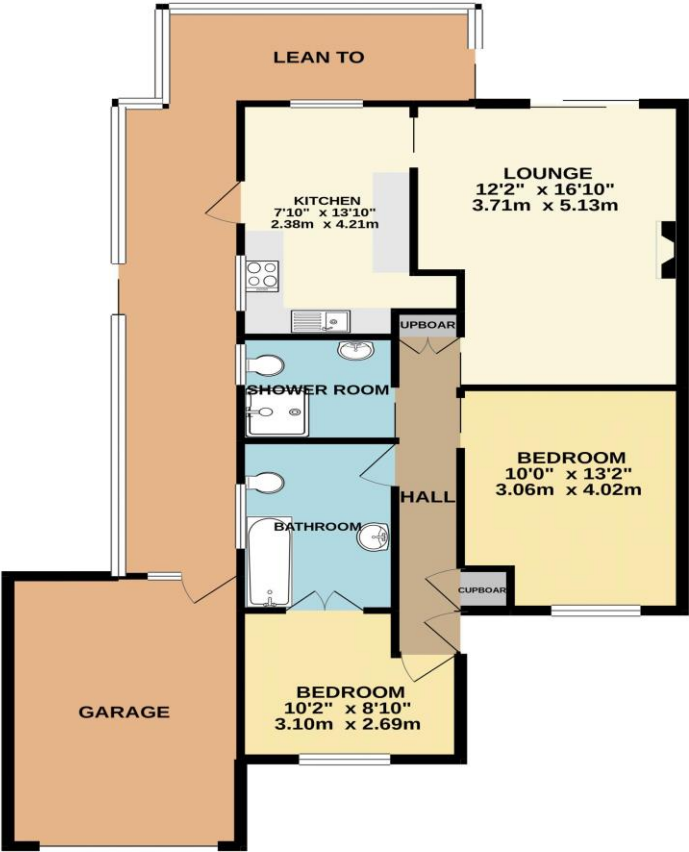
## GARAGE

Block paved driveway providing parking for several vehicles leads to single garage with up and over door, power and lighting, door to lean-to.

## REAR GARDEN

Laid to paving for ease of maintenance, flower and shrub borders, covered canopy.

GROUND FLOOR  
1089 sq.ft. (101.2 sq.m.) approx.

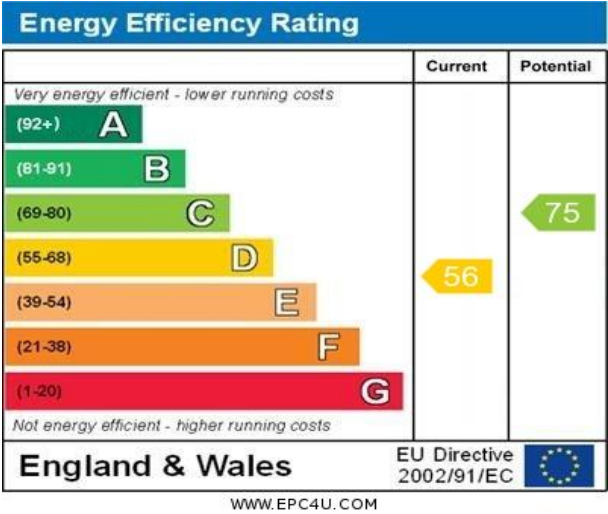


TOTAL FLOOR AREA : 1089 sq.ft. (101.2 sq.m.) approx.

Whilst every attempt has been made to ensure the accuracy of the floorplan contained here, measurements of doors, windows, rooms and any other items are approximate and no responsibility is taken for any error, omission or mis-statement. This plan is for illustrative purposes only and should be used as such by any prospective purchaser. The services, systems and appliances shown have not been tested and no guarantee as to their operability or efficiency can be given.  
Made with Metroplan ©2021

MONEY LAUNDERING REGULATIONS 2017 intending purchasers will be asked to produce identification and proof of financial status when an offer is received. We would ask for your co-operation in order that there will be no delay in agreeing the sale.

THE CONSUMER PROTECTION REGULATIONS 2008 The Agent has not tested any apparatus, equipment, fixtures and fittings or services and so cannot verify that they are in working order or fit for the purpose. A Buyer is advised to obtain verification from their Solicitor or Surveyor. References to the Tenure of a Property are based on information supplied by the Seller. The Agent has not had sight of the title documents. A Buyer is advised to obtain verification from their Solicitor. You are advised to check the availability of this property before travelling any distance to view. We have taken every precaution to ensure that these details are accurate and not misleading. If there is any point which is of particular importance to you, please contact us and we will provide any information you require. This is advisable, particularly if you intend to travel some distance to view the property. The mention of any appliances and services within these details does not imply that they are in full and efficient working order. These particulars are in draft form awaiting Vendors confirmation of their accuracy. These details must therefore be taken as a guide only and approved details should be requested from the agents



54 Kingsbury Aylesbury Buckinghamshire HP20 2JE  
01296 433666 | aylesbury@michaelanthony.co.uk